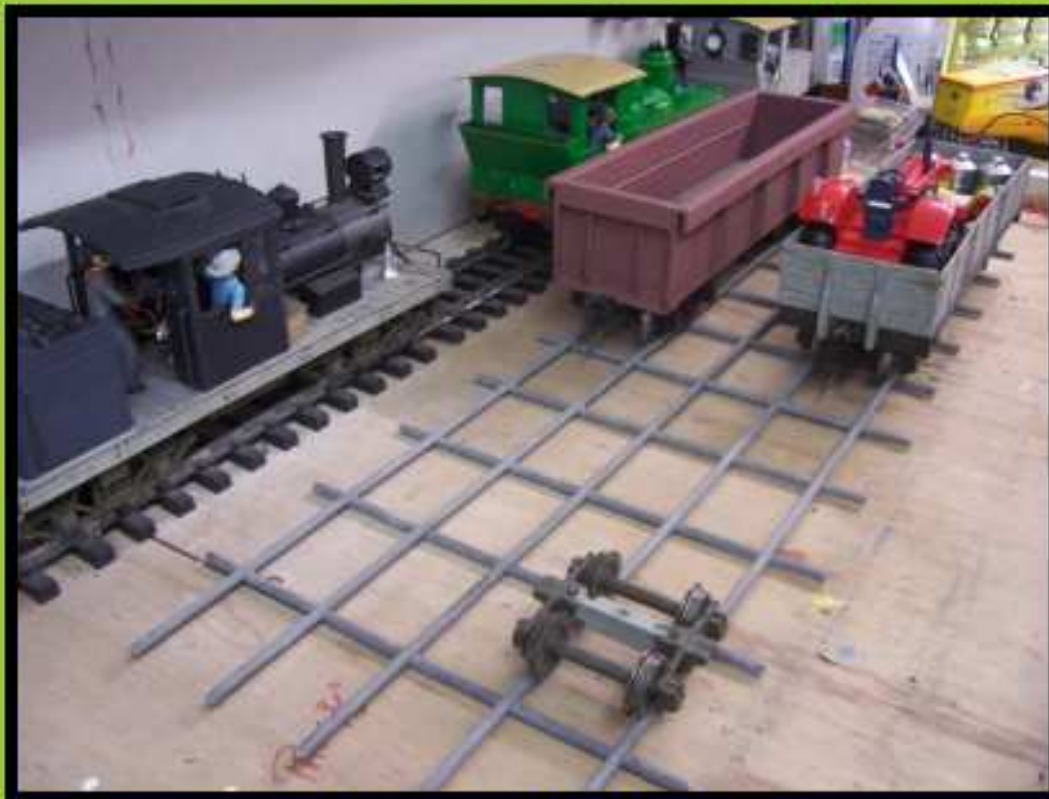


## BARRON TABLELAND RAILWAY

Archived pages from earlier versions of LATEST NEWS

This was the last entry for 2012

**16 November 2012 - "Cheap as Chips" track for out-of-site trackwork.**



Click on photo above to see Data Sheet.  
Welded Mesh cut up to form cheap track for out of site track areas.

If there is an item of interest to you that is no longer "clickable" on the website, just email me as I am happy to share and provide.

# BARRON TABLELAND RAILWAY

Archived pages from earlier versions of LATEST NEWS

**22 October 2012** - Outdoor - Open Signal Frame for **Orange Junction** completed.



Levers made from 0.8mm styrene, on cut-down old plastic cloths pegs, mounted on split pine elevated platform.



Modelled after the version in Wallangarra yard, Qld.

If there is an item of interest to you that is no longer “clickable” on the website, just email me as I am happy to share and provide.

# BARRON TABLELAND RAILWAY

Archived pages from earlier versions of LATEST NEWS

**19 October 2012** - Signal Cabin for **Sundial Junction** nears completion.



Made entirely from styrene, this is a five window version of Lowmead, Qld.  
More details are available via the "Buildings" page.

If there is an item of interest to you that is no longer "clickable" on the website, just email me as I am happy to share and provide.



## BARRON TABLELAND RAILWAY

Archived pages from earlier versions of LATEST NEWS

**27 September 2012** - New CLC wagon added to fleet on BTR.



Made from wood and styrene, this is a foreshortened model of a QR CLC wagon.

If there is an item of interest to you that is no longer “clickable” on the website, just email me as I am happy to share and provide.

# BARRON TABLELAND RAILWAY

Archived pages from earlier versions of LATEST NEWS

**05 September 2012 - BTR Loco Fleet - Big Day Out.**



Every Loco of the BTR Fleet on display at Shenanigan's Station.



Spring has arrived, 28 degrees celcius, we're in the Garden for some train running fun.

If there is an item of interest to you that is no longer "clickable" on the website, just email me as I am happy to share and provide.



## BARRON TABLELAND RAILWAY

Archived pages from earlier versions of LATEST NEWS

**27 August 2012 - BTR 0-6-2 Tank Loco gets Lined Out.**



The Yellow Linework made use of a Decal sheet compliments of Greg Hunter.



These lines to Dome, Tank sides and Bunker rear wall, finish the Loco nicely.

If there is an item of interest to you that is no longer “clickable” on the website, just email me as I am happy to share and provide.

# BARRON TABLELAND RAILWAY

Archived pages from earlier versions of LATEST NEWS

**14 August 2012 - BTR Loco Coaling facility.**



General view of Crane. Lifting Beam about to pick up Skip.



The Coal Skip unloading into Loco Bunker.

If there is an item of interest to you that is no longer “clickable” on the website, just email me as I am happy to share and provide.



# BARRON TABLELAND RAILWAY

Archived pages from earlier versions of LATEST NEWS

**23 July 2012** - BTR Workshop has repainted the 0-6-2 Tank Locomotive.



The "Rainforest" GREEN new paint job.  
Some bright YELLOW linework will soon enhance this Loco a little more.

**17 July 2012** - 0-6-2 Tank Locomotive joins the BTR.



An LGB Loco was the basis for this minor rework to attain a Queensland character Loco.  
When a final colour is applied it will be used for shunting.

If there is an item of interest to you that is no longer "clickable" on the website, just email me as I am happy to share and provide.



## BARRON TABLELAND RAILWAY

Archived pages from earlier versions of LATEST NEWS

### 4 July 2012 - Steam Locomotive Water Stands for BTR.



Using some old garden watering system parts two Water Stands were fashioned to resemble QR style. Now thirsty steam locos can be watered at BTR Stations.

### 14 June 2012 - Video Camera MOUNTING with "Steering" into curves.



A steerable Video Camera mounting has been fitted to a flat car on the BTR. This will enable video footage on curved track to 'see around curves' so that the video viewer can see better down the track, what is coming up next.

If there is an item of interest to you that is no longer "clickable" on the website, just email me as I am happy to share and provide.

## BARRON TABLELAND RAILWAY

Archived pages from earlier versions of LATEST NEWS

**9 June 2012** - BLV Class Guards Van joins the fleet at the BTR.



A Bachmann coach has been modified to resemble a CLV / BLV Guards Van.  
This will allow use in mixed train traffic to cater for more passengers.

**29 April 2012** - Two S Class timber / log wagons completed.



Two S Class wagons ready for work on the BTR.



# BARRON TABLELAND RAILWAY

Archived pages from earlier versions of LATEST NEWS

**24 April 2012** - Completed shipping container wagons - BIGY Class.



Two BIGY Class wagons entered service on BTR today.

**13 April 2012** - shipping container wagons for the 2800 Class.



Trials are underway for the planned BIGY class container wagons that will join the BTR soon.  
These will be used behind the 2800 Class locomotive.  
They will carry either, two 20'-0" containers or one 40'-0" container, each.

# BARRON TABLELAND RAILWAY

Archived pages from earlier versions of LATEST NEWS

**13 April 2012** - The PB15 Cab roof extended.



A photo of work done, Cab roof now overhanging the Tender.

**2 April 2012** - Whip Crane enters service on the BTR.

The Whip Crane is now completed.



Click on the photo above to see a 'pdf' file on work done so far.

If there is an item of interest to you that is no longer "clickable" on the website, just email me as I am happy to share and provide.



## BARRON TABLELAND RAILWAY

Archived pages from earlier versions of LATEST NEWS

**26 March 2012 - Whip Crane progress.**

Almost ready for painting, the Whip Crane nears completion.



A photo of work done so far.

# BARRON TABLELAND RAILWAY

Archived pages from earlier versions of LATEST NEWS

## 07 March 2012 - Figure making progress.

Getting better at forming the figures.



On left a purchased figure, in centre a successful first bake, on right a failed over-cooked "Michelin Man"



I have changed from 1.6mm copper wire armatures to 0.88mm copper, Aluminium foil armatures are tricky.

Copper wire alone can pop out of thin PolyClay layers, Aluminium foil when crumpled, bonds better. Next, an outer layer of PolyClay for clothing, hair, hands and shoes, then final bake, then painting.



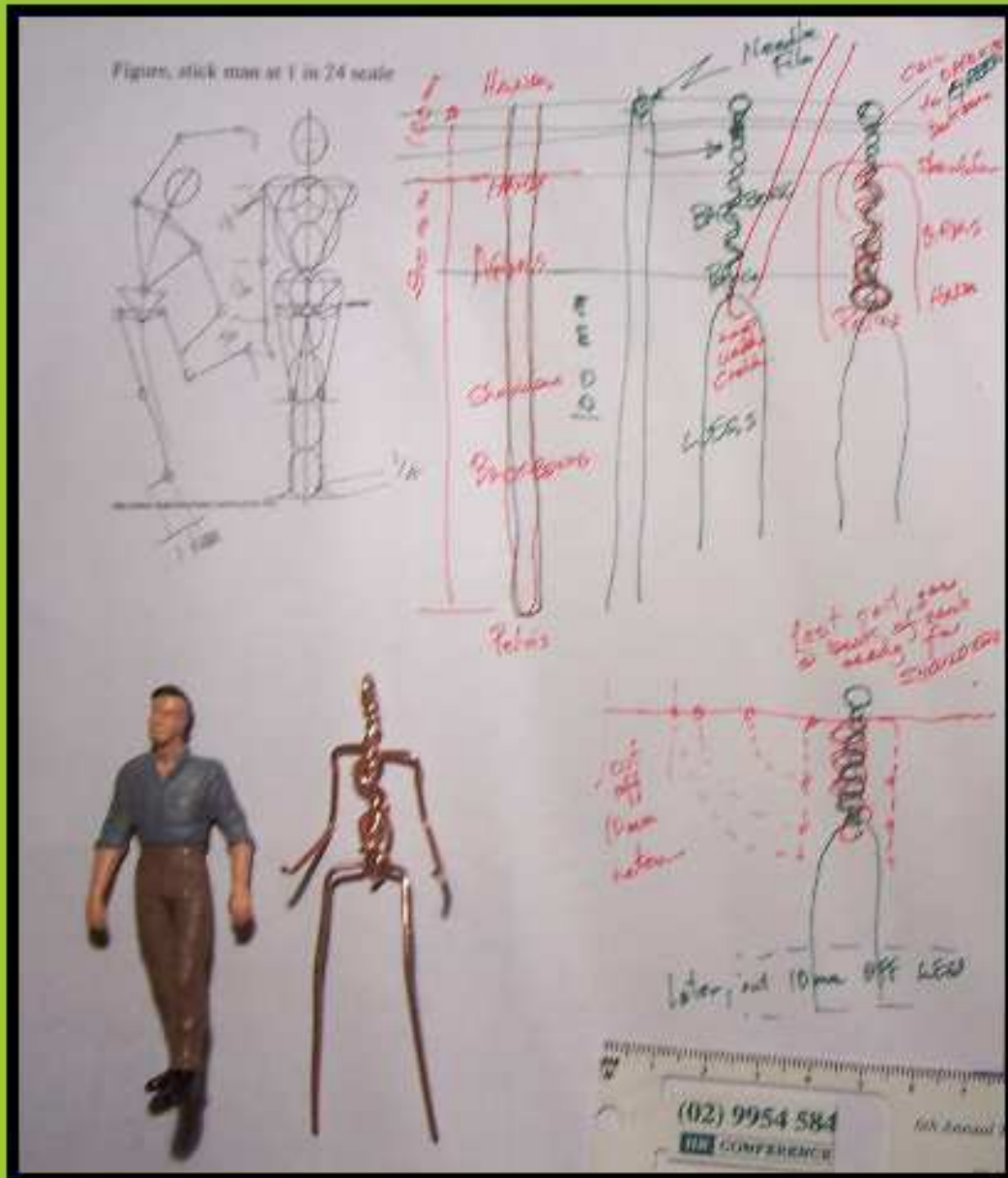
# BARRON TABLELAND RAILWAY

Archived pages from earlier versions of LATEST NEWS

## 24 February 2012 - Figures in 1/24th Scale.

Following a recent article in Garden RAILWAYS,  
I have started playing around with figure forming.

Forming the skeleton (Armature) to the right proportions is critical to attaining a lifelike figure.  
Click within the photo below to see a pdf file that discusses such armature proportions.



In future updates on this topic, more progress will be revealed.

# BARRON TABLELAND RAILWAY

Archived pages from earlier versions of LATEST NEWS

**1 February 2012 - PB15 Steam Loco ready to run.**



The air tanks under the footplate in front of Cab are yet to be added.



PB15 (1924) - 700 series, looks just right with these coaches.

If there is an item of interest to you that is no longer “clickable” on the website, just email me as I am happy to share and provide.



## BARRON TABLELAND RAILWAY

Archived pages from earlier versions of LATEST NEWS



Our Driver (Mr Max Power) and Fireman (Mr Col Shifter) are ready to run the PB15.

To see more details, go to the Locomotives page,  
then scroll down to the PB15 Class photos,  
click in the left hand photo, to see a 'pdf' file document that is periodically updated.

## BARRON TABLELAND RAILWAY

Archived pages from earlier versions of LATEST NEWS

**25 January 2012 - PB15 Steam Loco nearing completion.**



The initial model as a 1910 version prior to rebuild.



QR style cow catcher yet to be made, new Headlight & Chimney have been installed

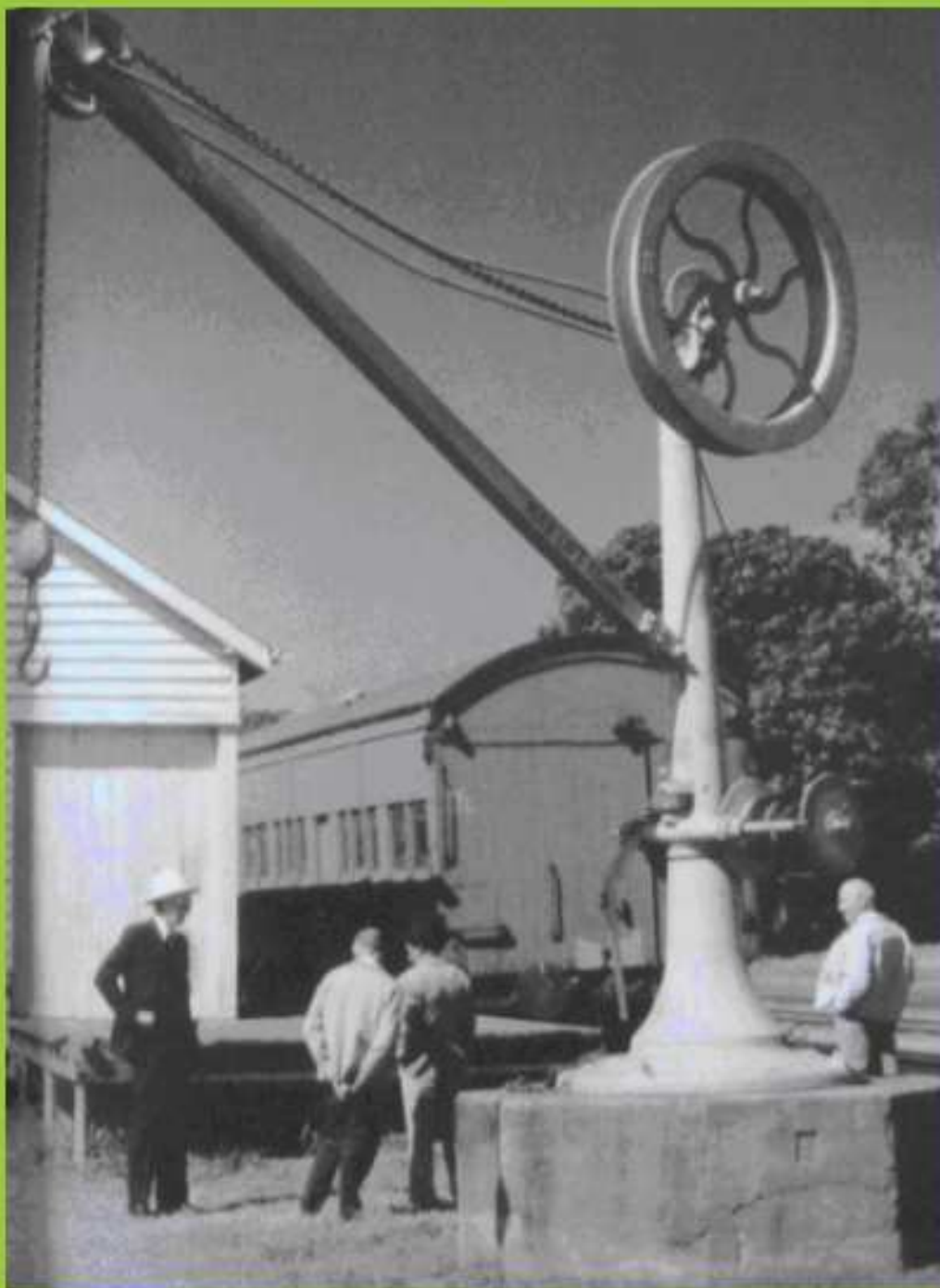
If there is an item of interest to you that is no longer “clickable” on the website, just email me as I am happy to share and provide.



## BARRON TABLELAND RAILWAY

Archived pages from earlier versions of LATEST NEWS

**15 January 2012** - Queensland style Whip Crane under construction.



In the absence of a dimensioned drawing, Geof has proportioned parts from photos.

## BARRON TABLELAND RAILWAY

Archived pages from earlier versions of LATEST NEWS



Views from both sides were helpful.

If there is an item of interest to you that is no longer “clickable” on the website, just email me as I am happy to share and provide.



## BARRON TABLELAND RAILWAY

Archived pages from earlier versions of LATEST NEWS



Parts layed out next to dimensioned photos.

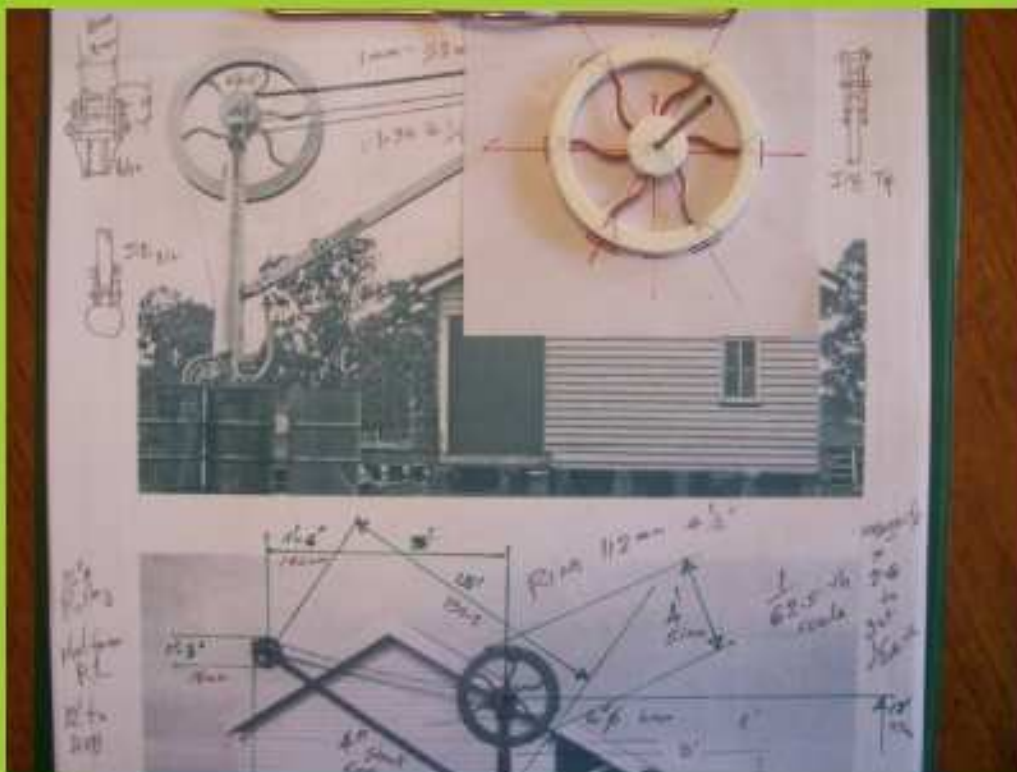


The "S" spokes & 'whip' wheel [flywheel] Rim & Hub.

If there is an item of interest to you that is no longer "clickable" on the website, just email me as I am happy to share and provide.

# BARRON TABLELAND RAILWAY

Archived pages from earlier versions of LATEST NEWS



The 'whip' wheel proved tricky to assemble.



In Close-Up, the "S" curved spokes are 1.6mm copper wire.

If there is an item of interest to you that is no longer "clickable" on the website, just email me as I am happy to share and provide.



## BARRON TABLELAND RAILWAY

Archived pages from earlier versions of LATEST NEWS



A 'mock-up' of the Whip Crane prior to completion.

# BARRON TABLELAND RAILWAY

Archived pages from earlier versions of LATEST NEWS

**05 January 2012 - The 2800 Class, almost completed.**



To see progress, go to the Locomotives page, then scroll down to the 2800 Class photo, click in the left hand photo, to see a 'pdf' file document that is periodically updated.

**To view an Archive of 2011 Latest News,  
click within the BOX below.**



**To view an Archive of 2010 Latest News,  
click within the BOX below.**



**To view an Archive of 2005 to 2010 Latest News,  
click within the BOX below.**



To view even earlier versions of Latest News, go back to main page, then click the box at the foot of that page.

If there is an item of interest to you that is no longer "clickable" on the website, just email me as I am happy to share and provide. 24